



PRODUCT CATALOGUE

ABOUT US

FARHAT STEEL SARL was established in 2006. In the past 12 years, it has progressed and became the innovative enterprise that it is today with more than 25 dedicated employees. Supporting all kinds of Stainless steel , Steel works; Shower Glass, Doors, Barriers, Sliders, Cabinets, stairs and all kind of accessories .

Every item manufactured by FARHAT STEEL has been designed to the highest standards, using the best quality materials and excellent workmanship. And we continue to enhance our range with new and updated designs.

Our team will give you best solution, price and delivery time.



CONTENTS

03 Door Control Series

15 Bathroom Fittings Series

22 Handle Series

34 Moving Door Series

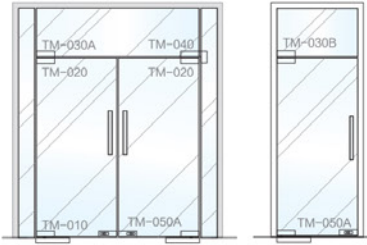
42 Spider Fitting Series / Stair Rail Series / Swimming Pool Series

56 Hanging Wheels Series / Guide Rail Series

76 Moving Door Series

93 Glass Fitting Series

Square Door Clamp



Patch Fitting Installation Schematic Diagram

Panel installation

Door thickness: 10-12mm

Available for: The glass door installed floor spring

Material: Stainless Steel/Aluminum

Features:

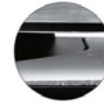
Patch head of various specifications are available and can be used in conjunction with springs from DORMA/GEZE/NEWSTAR/BONGO/MAB and etc.



Buckle type



Spring type



Asbestos pad



GM-10

Bottom clamp

Material / Stainless steel/ Aluminum alloy

Thickness of cover / 0.8mm/1.0mm

Finish /



GM-30A

Top patch clamp

Material / Stainless steel/ Aluminum alloy

Thickness of cover / 0.8mm/1.0mm

Finish /



GM-20

Upper clamp

Material / Stainless steel/ Aluminum alloy

Thickness of cover / 0.8mm/1.0mm

Finish /



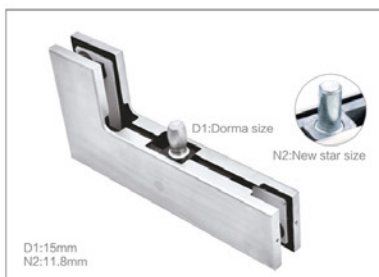
GM-30B

Top patch with plate

Material / Stainless steel/ Aluminum alloy

Thickness of cover / 0.8mm/1.0mm

Finish /



GM-40

Crank clamp

Material / Stainless steel/ Aluminum alloy

Thickness of cover / 0.8mm/1.0mm

Finish /



TM-6031-S

Center lock

Material / Stainless steel/ Aluminum alloy

Thickness of cover / 0.8mm/1.0mm

Finish / Polishing/Satin/TI Golden



GM-9104

Central axis

Material / 201/ 304 Stainless steel

Finish /



TM-6031-K

Lock box

Material / Stainless steel/ Aluminum alloy

Thickness of cover / 0.8mm/1.0mm

Finish / Polishing/Satin/TI Golden



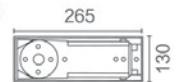
Available for:	Steel/Wooden and glass door	Section speed adjustment valve:	Yes
Double action door:	Yes		



TM-M7300 <i>Floor spring</i>	
Door weight:	75kg
Max door width:	750mmx2100mm
Size:	



TM-M7301	
Door weight:	80kg
Max door width:	80mmx2100mm
Size:	



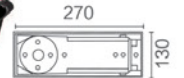
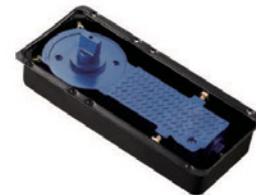
Door weight:	95kg
Max door width:	950mmx2100mm
Size:	252mmx110mmx54mm



TM-M7302 <i>Floor spring</i>	
Door weight:	80kg
Max door width:	800mmx2100mm
Size:	



Door weight:	135kg
Max door width:	1200mmx2400mm
Size:	307mmx100mmx42mm



Door weight:	75kg
Max door width:	750mmx2100mm
Size:	252mmx101mmx52mm

Central Lock Series



304 Stainless Steel High Quality Glass Lock



GM-407-S+K

Double door lock in one side key

Material / 304 Stainless steel

Finish / Polishing/Satin/TI Golden



GM-407-S

Single door one side key

Material / 304 Stainless steel

Finish / Polishing/Satin/TI Golden



GM-35-S

Single door mini bolt lock

Material / Zinc alloy

Finish / Polishing/Satin/TI Golden

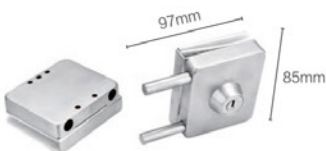


GM-35-S+K

Double door mini bolt lock

Material / Zinc alloy

Finish / Polishing/Satin/TI Golden



Double door lock in one side key

Material / 304 Stainless steel

Finish / Polishing/Satin/TI Golden



GM-409-S+K

Double door lock in two side with knob

Material / 304 Stainless steel

Finish / Polishing/Satin/TI Golden



Single door one side key

Material / 304 Stainless steel

Finish / Polishing/Satin/TI Golden



Single door lock in two side with knob

Material / 304 Stainless steel

Finish / Polishing/Satin/TI Golden



High Quality Handle Series

High Quality Handle Lock



Handle lock for single door

Material | Zinc alloy

Finish | Polishing/Satin/Ti Golden



Handle lock for double door

Material | Zinc alloy

Finish | Polishing/Satin/Ti Golden



GM-91-S+K

Handle lock for double door

Material | Zinc alloy/304 Stainless steel

Finish | Polishing/Satin/Ti Golden



TM-B220

Handle lock for double door

Material | Zinc alloy/304 Stainless steel

Finish | Polishing/Satin/Ti Golden



Handle lock for single door

Material | 304 Stainless steel

Finish | Polishing/Satin/Ti Golden



Handle lock for double door

Material | 304 Stainless steel

Finish | Polishing/Satin/Ti Golden



Handle lock for double door

Material | Zinc alloy/304 Stainless steel

Finish | Polishing/Satin/Ti Golden



Handle lock for double door

Material | Zinc alloy/304 Stainless steel

Finish | Polishing/Satin/Ti Golden



MATERIAL : Forged Brass /zinc

GLASS : 8mm (5/16") to 12mm (1/2") flat tempered glass

FUNCTION : Self-closes to 0° when within 30° open position
Swings 90° in and 90° out

LOADING : Use 2 hinges for maximum loading of 40kgs

Use 3 hinges for maximum loading of 55kgs

GASKETS : 1mm / 2mm thick

PACKING : Packed and sold by piece, with gaskets and wall fixings

FINISH : Polishing, Satin, Titanium



Pvc pad



Asbest's Pad

Square Bevel Bathroom Glass Clamp



GH-1 90°

Glass to wall hinge (two side) 90°

Material / Zinc alloy/Brass

Size / 90x55, 70x50

Finish /  



GH-2 180°

Glass to glass hinge 180°

Material / Zinc alloy/Brass

Size / 90x55, 70x50

Finish /  



GH-5 135°

Glass to glass hinge 135°

Material / Zinc alloy/Brass

Size / 90x55, 70x50

Finish /  



GH-4 90°

Glass to glass hinge 90°

Material / Zinc alloy/Brass

Size / 90x55, 70x50

Finish /  



TM-C254 90°

Glass to wall hinge (two side) 90°

Material / Zinc alloy/Brass

Size / 90x55, 70x50

Finish /  



TM-X2

Glass to wall hinge (two side) 90°

Material / Zinc alloy/Brass

Size / 90x55, 70x50

Finish /  



TM-X3

Glass partition brace 180° double

Material / 304 Stainless steel

Finish / Polishing/Satin



GGC-4C

Square 90° glass clamp

Material / 304 Stainless steel

Finish / /Satin



GGC-5C

Square 90° glass-glass clamp

Material / 304 Stainless steel

Finish / Polishing/Satin



GGC-6C

Square 135° glass-glass clamp

Material / 304 Stainless steel

Finish / Polishing/Satin



GGC-6C

Square 180° glass-glass clamp

Material / 304 Stainless steel

Finish / Polishing/Satin

High Quality Brass Connecting



TM-C710

Flange

Material | Brass/Aluminium
Size | $\phi 25/\phi 22/\phi 19$



TM-C711

Suspension clamp

Material | Brass/Aluminium
Size | $\phi 25/\phi 22/\phi 19$



Suspension clamp

Material | Brass/Aluminium
Size | $\phi 25/\phi 22/\phi 19$



TM-C714

360° rotatable connecting piece

Material | Brass/Aluminium
Size | $\phi 25/\phi 22/\phi 19$



Plug icephaly flange

Material | Brass/Aluminium
Size | $\phi 25/\phi 22/\phi 19$



TM-C716

Line connecting piece

Material | Brass/Aluminium
Size | $\phi 25/\phi 22/\phi 19$



TM-C717

90° connecting piece

Material | Brass/Aluminium
Size | $\phi 25/\phi 22/\phi 19$



TM-C718

135° connecting piece

Material | Brass/Aluminium
Size | $\phi 25/\phi 22/\phi 19$



Suspension clamp

Material | Brass/Aluminium
Size | $\phi 25/\phi 22/\phi 19$



Suspension clamp

Material | Brass/Aluminium
Size | $\phi 25/\phi 22/\phi 19$



Glass to pipe connecting piece

Material | Brass/Stainless steel



Wall to pipe connecting piece

Material | Stainless steel



Suspension clamp

Material | Brass



Suspension clamp

Material | Brass



360° rotatable connecting piece

Material | Brass/Aluminium



Connecting

Material | 304 Stainless steel

Rotatable clamp



Suspension wheel

Material | Brass/Stainless steel

Finish | Polishing/Satin



Rotatable clamp

Material | Brass/Stainless steel

Finish | Polishing/Satin



Rotatable clamp

Material | Brass/Stainless steel

Finish | Polishing/Satin



Rotatable clamp

Material | Brass/Stainless steel

Finish | Polishing/Satin



TM-D771

180° pipe to glass

Material / 304 Stainless steel



TM-D772

90° pipe

Material / 304 Stainless steel



TM-D773

135° pipe

Material / 304 Stainless steel



TM-D774

90° pipe to glass

Material / 304 Stainless steel



TM-D775

pipe to glass

Material / 304 Stainless steel



TM-D776

pipe to glass

Material / 304 Stainless steel



TM-D777

Knigthead clamp 90°

Material / 304 Stainless steel



TM-D778

Connecting

Material / 304 Stainless steel



TM-D779B

Floor guide

Material / 304 Stainless steel



TM-D780

Floor guide

Material / 304 Stainless steel

Bathroom Support(Round tube)



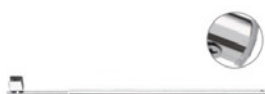
TM-D781

Platocephaly head bathroom support

Material / 201/304 Stainless steel

Size / 30-50cm/40-60cm/50-70cm/60-80cm/70-90cm/80-100cm/100-120cm

Finish / Polishing/Satin



TM-D782

Flat head bathroom support

Material / 201/304 Stainless steel

Size / 40-60cm/60-80cm/80-100cm/100-120cm

Finish / Polishing/Satin



TM-D783

Two clamp bathroom support

Material / 201/304 Stainless steel

Size / 40-60cm/60-80cm/80-100cm/100-120cm

Finish / Polishing/Satin



135° Flat head bathroom support

Material / 201/304 Stainless steel

Size / 30cm/50cm

Finish / Polishing/Satin

bathroom support(Square tube)



Square tube bathroom support

Material / 201/304 Stainless steel

Finish / Polishing/Satin



Square tube bathroom support

Material / 201/304 Stainless steel

Finish / Polishing/Satin



Square tube bathroom support

Material / 201/304 Stainless steel

Finish / Polishing/Satin



Square tube bathroom support

Material / 201/304 Stainless steel

Finish / Polishing/Satin



Square tube bathroom support

Material / 304 Stainless steel

Finish / Polishing/Satin



Square tube bathroom support

Material / 304 Stainless steel

Finish / Polishing/Satin



Square tube bathroom support

Material / 304 Stainless steel

尺寸 Size / 300-500cm/600-1000cm

Finish / Polishing/Satin



90° Bathroom support

Material / 304 Stainless steel

Finish / Polishing/Satin



180° Bathroom support

Material / 304 Stainless steel

Finish / Polishing/Satin



90° Bathroom support

Material / 304 Stainless steel

Finish / Polishing/Satin



Curve bathroom support

Material / 304 Stainless steel

Finish / Polishing/Satin

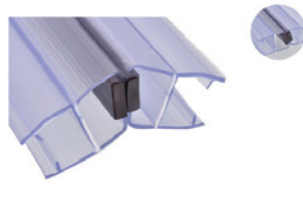


TM-K001 90°

90 ° Magnetic sealing bar

Color/ Black/White

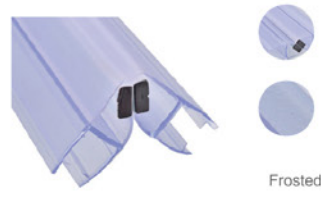
size / 6mm/8mm/10mm/12mm



135 ° Magnetic sealing bar

Color/ Black/White

size / 6mm/8mm/10mm/12mm



90 ° Magnetic sealing bar

Color/ Black/White

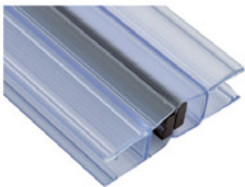
size / 6mm/8mm/10mm/12mm



135 ° Magnetic sealing bar

Color/ Black/White

size / 6mm/8mm/10mm/12mm



180 ° Magnetic sealing bar

Color/ Black/White

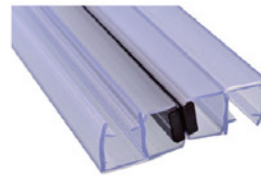
size / 6mm/8mm/10mm/12mm



Specil magnetic sealing bar

Color/ Black/White

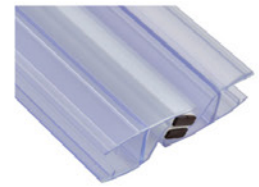
size / 6mm/8mm/10mm/12mm



Specil magnetic sealing bar

Color/ Black/White

size / 6mm/8mm/10mm/12mm



Specil magnetic sealing bar

Color/ Black/White

size / 6mm/8mm/10mm/12mm



Specil magnetic sealing bar

Color/ Black/White

size / 6mm/8mm/10mm/12mm



Specil magnetic sealing bar

Color/ Black/White

size / 6mm/8mm/10mm/12mm



Specil magnetic sealing bar

Color/ Black/White

size / 6mm/8mm/10mm/12mm



Specil sealing bar

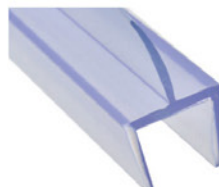
size / 6mm/8mm/10mm/12mm



TM-K013

0 °sealing bar

size / 6mm/8mm/10mm/12mm



Middle sealing bar

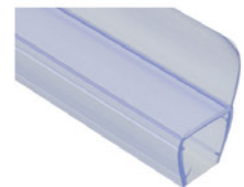
size / 6mm/8mm/10mm/12mm



TM-K015 90°

90 °sealing bar

size / 6mm/8mm/10mm/12mm



TM-K016 180°

180 °sealing bar

size / 6mm/8mm/10mm/12mm



TM-F1132



TM-F1139



TM-F1140

Door Handle



Size
38x350
38x500



Size
38x1200
38x1800



Size
19x38x600
25x45x600
25x45x800



Size
25x38x600
28x38x800



Size
25x400
25x600
32x800



Size
32x400
32x600
35x600
38x800



Size
32x400
32x600
38x600
38x800



Size
32x600
32x800



Size
32x500
32x600
38x800

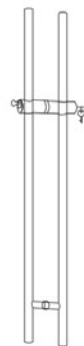
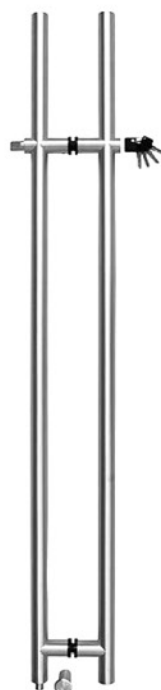


Size
32x550
32x600
32x800



Size
15x30x440
25x45x800

TM-E806



Size
35x1125x1500



Size
25x270x855x1340



Size /
19x200x400
25x300x500

TM-E836

Bathroom handle

Material / 304/201 Stainless steel



Size /
25x500

TM-E837

Bathroom handle

Material / 304/201 Stainless steel



Size /
25x400
19x450

TM-E838

Bathroom handle

Material / 304/201 Stainless steel



Size /
25x300

TM-E839

Bathroom handle

Material / 304/201 Stainless steel

Mini Bathroom Handle



TM-E857

Mini bathroom handle

Material / 304/201 SS/Brass/Zinc/Aluminium



TM-E858

Mini bathroom handle

Material / 304/201 SS/Brass/Zinc/Aluminium



TM-E859

Mini bathroom handle

Material / 304/201 SS/Brass/Zinc/Aluminium



TM-E860

Mini bathroom handle

Material / 304/201 SS/Brass/Zinc/Aluminium



Mini bathroom handle

Material / 304/201 SS/Brass/Zinc/ABS



TM-E852

Mini bathroom handle

Material / 304/201 SS/Brass/Zinc



Mini bathroom handle

Material / 304/201 SS/Brass/Zinc/Aluminium



Mini bathroom handle

Material / 304/201 SS/Brass/Zinc



Mini bathroom handle

Material / Zinc alloy



Mini bathroom handle

Material / Zinc alloy



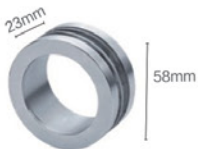
Mini bathroom handle

Material / ABS



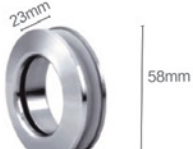
Mini bathroom handle

Material / Zinc alloy/ABS



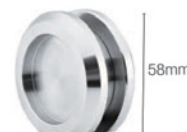
Moving door handle

Material / 304Stainless steel/Aluminum alloy



Moving door handle

Material / 304Stainless steel/Aluminum alloy



TM-8000

Moving door handle

Material / 304Stainless steel/Aluminum alloy



Moving door handle

Material / 304Stainless steel/Aluminum alloy



Moving door handle

Material / 304Stainless steel/Aluminum alloy



Moving door handle

Material / 304Stainless steel/Aluminum alloy



Moving door handle

Material / 304Stainless steel/Aluminum alloy



Moving door handle

Material / 304Stainless steel/Aluminum alloy

TM-8001

Standard Application



30x10 Sectional installation of square pipe with jumping proof pillar



TM-A01-1

Name / Glass hanging wheel



TM-A01-2

Name / Tube support to wall



TM-A01-3

Name / Connector



TM-A01-4

Name / Flange



TM-A01-5

Name / Door stopper



TM-A01-6

Name / Floor guide



TM-A01-7

Name / Moving door handle



TM-A01-8

Name / $\Phi 8$ Solid pipe



TM-A01-9

Name / 30x10 Square pipe

TM-8002A

Standard Application



30x10 Sectional installation of square pipe with jumping proof pillar



TM-A02-1

Name / Glass hanging wheel



TM-A02-2

Name / Tube support to wall



TM-A02-3

Name / Pipe stopper



TM-A02-4

Name / Flange



TM-A02-5

Name / Door stopper



TM-A02-6

Name / Floor guide



TM-A02-7

Name / Moving door handle



TM-A02-8

Name / 30x10 Square pipe

TM-8002B

Standard Application



30x10 Sectional installation of square pipe with jumping proof pillar



TM-A01-1

Name / Glass hanging wheel



TM-A01-2

Name / Tube support to wall



TM-A01-3

Name / Connector



TM-A01-4

Name / Flange



TM-A02-5

Name / Door stopper



TM-A01-6

Name / Floor guide



TM-A01-7

Name / Moving door handle



TM-A02-8

Name / Pipe stopper



TM-A01-9

Name / 30x10 Square pipe

TM-8007

Standard Application



Sectional installation of $\Phi 25$ pipe bathroom hanging wheel



TM-A07-1

Name / Glass hanging wheel



TM-A07-2

Name / Tube support to glass



TM-A07-3

Name / Glass hanging whe



TM-A07-4

Name / Floor guide



TM-A07-5

Name / Door stopper



TM-A07-6

Name / Moving door handle



TM-A07-7

Name / $\Phi 25$ Pipe

TM-8012

Standard Application



TM-A12-1

Name / Glass hanging wheel



TM-A12-2

Name / Floor guide



TM-A12-3

Name / Tube support to glass



TM-A12-4

Name / Floor guide



TM-A12-5

Name / Pipe plug



TM-A12-6

Name / Moving door handle



TM-A12-7

Name / Φ25 Pipe



TM-A12-8

Name / Glass connector system tools

TM-8016

Standard Application



TM-A12B-1

Name / Glass hanging wheel



TM-A12B-2

Name / Floor guide



TM-A12B-3

Name / Tube support to glass



TM-A12B-4

Name / Floor guide



TM-A12B-5

Name / Pipe plug



TM-A12B-6

Name / Tube support to glass



TM-A12B-7

Name / Moving door handle



TM-A12B-8

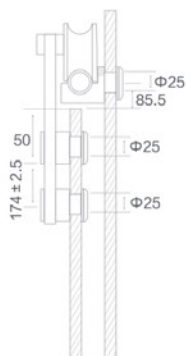
Name / Φ25 Pipe



TM-A12B-9

Name / Glass connector system tools

Standard Application



TM-A13-1

Name / Glass hanging wheel



TM-A13-2

Name / Floor guide



TM-A13-3

Name / Tube support to glass



TM-A13-4

Name / Floor Guide



TM-A13-5

Name / Pipe plug



TM-A13-6

Name / Moving door handle



TM-A13-7

Name / Φ25 Pipe

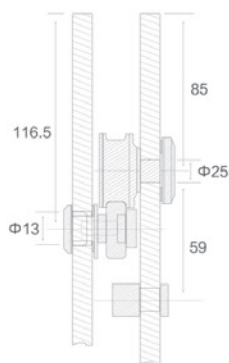


TM-A13-8

Name / Glass connector system tools



Standard Application



TM-A14-1

Name / Glass hanging wheel



TM-A14-2

Name / Floor guide



TM-A14-3

Name / Tube support to glass



TM-A14-4

Name / Floor guide



TM-A14-5

Name / Pipe plug



TM-A14-6

Name / Moving door handle



TM-A14-7

Name / Φ25 Pipe



TM-A14-8

Name / Glass connector system tools

**TM-E900***Name / Glass hanging wheel***TM-E901***Name / Glass hanging wheel***TM-E902***Name / Glass hanging wheel***TM-E903***Name / Glass hanging wheel***TM-E904***Name / Glass hanging wheel***TM-E905***Name / Glass hanging wheel***TM-E906***Name / Glass hanging wheel***TM-E907***Name / Floor guide***TM-E908***Name / Tube support to wall***TM-E909***Name / Tube support to glass***TM-E910***Name / Clamp fixing for track***TM-E911***Name / Clamp of double fixing***TM-E912***Name / Tube support to wall***TM-E913***Name / Tube support to wall***TM-E914***Name / Floor guide***TM-E915****TM-E916****TM-E917****TM-E918***Name / Localizer***TM-E919***Name / Floor guide***TM-E920***Name / Localizer***TM-E921***Name / Sliding door cable roller***TM-E922***Name / Floor guide***TM-E923***Name / Floor guide*

**TM-E924***Name / Tube support to wall***TM-E925***Name / Tube support to glass***TM-E926***Name / Floor guide***TM-E927***Name / Tube support to glass***TM-E928***Name / Single tube to ceiling clamp***TM-E929***Name / Tube corner insert***TM-E930***Name / Clamp fixing for track***TM-E931***Name / Tube corner insert***TM-E932***Name / Tube support to wall***TM-E933***Name / Floor guide***TM-E934***Name / Localizer***TM-E935***Name / Pipe plug***TM-E936***Name / Sliding sleeve***TM-E937***Name / Fixed fittings***TM-E938***Name / T-type fittings***TM-E939***Name / Glass connector system tools***TM-E940***Name / Fixed glass and wall***TM-E941***Name / Fixed glass and wall***TM-E942***Name / Fixed glass and wall***TM-E943***Name / Fixed glass and wall***TM-E944***Name / Fixed glass and wall***TM-E945***Name / Fixed glass and wall***TM-E946***Name / Fixed glass and wall***TM-E947***Name / Hanging round in lined*



GM-04

Name / Glass connector
50D*50L / 50D*38L / 45D*38L



Name / Glass connector



GM-02

Name / Glass connector
Size:8CM/15CM/20CM



Name / Glass connector



Name / Glass connector



Name / Glass/wall corner connector



Name / Glass/wall corner connector



Name / Glass/wall corner connector



Name / Glass/wall corner connector



Name / Cat's eye



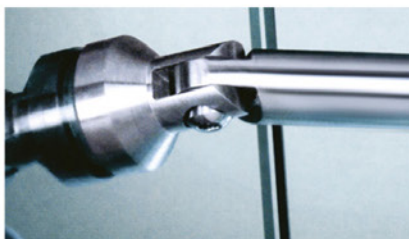
Name / Clamping connector



Name / Glass/wall corner connector



Name / Glass/wall corner connector





TM-E997



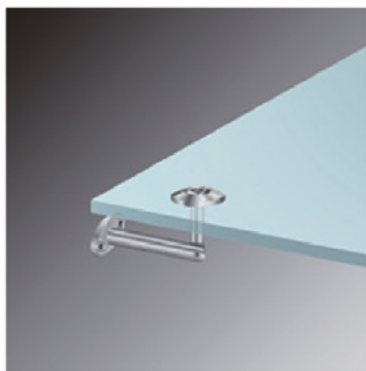
GM-16

Name / Sliding fixing



GM-17

Name / Glass/wall corner connector



GM-15

Name / Glass/wall corner connector





TM-F1001
Two claw

Material | 201/304/316 Stainless steel
Hole distance | 200mm/220mm /250mm



TM-F1002
One claw

Material | 201/304/316 Stainless steel
Hole distance | 200mm/220mm /250mm



TM-F1003
Two K claw

Material | 201/304/316 Stainless steel
Hole distance | 200mm/220mm /250mm



TM-F1004
One K claw

Material | 201/304/316 Stainless steel
Hole distance | 200mm/220mm /250mm



TM-F1005
One K claw with plate

Material | 201/304/316 Stainless steel
Hole distance | 200mm/220mm /250mm



TM-F1006
Two claw with plate

Material | 201/304/316 Stainless steel
Hole distance | 200mm/220mm /250mm



TM-F1007
Merger of one claw

Material | 201/304/316 Stainless steel
Hole distance | 200mm/220mm /250mm



TM-F1008
Merger of two claw

Material | 201/304/316 Stainless steel
Hole distance | 200mm/220mm /250mm



TM-F1009
Short one claw

Material | 201/304/316 Stainless steel
150mm/160mm/200mm/220mm/250mm /300mm



TM-F1010
Long one claw

Material | 201/304/316 Stainless steel
150mm/160mm/200mm/220mm/250mm /300mm



TM-F1011 90°
90° Two claw

Material | 201/304/316 Stainless steel
150mm/160mm/200mm/220mm/250mm /300mm



TM-F1012 180°
180° Two claw

Material | 201/304/316 Stainless steel
150mm/160mm/200mm/220mm/250mm /300mm



TM-F1013
Three claws

Material | 202/304 Stainless steel
Hole distance |
150mm/160mm/200mm/220mm/250mm
/300mm



TM-F1014
Four claws

Material | 202/304 Stainless steel
Hole distance |
150mm/160mm/200mm/220mm/250mm
/300mm



TM-F1015
Bave

Material | Iron



TM-F1016
Clamp

Material | 202/304 Stainless steel



Clamp

Material | 202/304 Stainless steel



#70 one claw



#70 90 ° claw



#70 180 ° two claw



#70 Three claw



#70 four claw



One claw



900 One claw



Admisting one claw



TM-F1085



TM-F1086



TM-F1087



TM-F1088



TM-F1089



TM-F1090



TM-F1091



TM-F1092



TM-F1093



TM-F1094



TM-F1095



TM-F1096



TM-F1097



TM-F1098



TM-F1099



TM-F1100



TM-F1101



TM-F1102



TM-F1103



TM-F1104



TM-I1434
Hollow stainlesssteel adjusting screw

Material | Stainless steel
Size | ϕ 12/ ϕ 19/ ϕ 25/ ϕ 30/ ϕ 40
Height | 25/30/40/50/60/70/80/100/120/150/200

Finish | Polishing/Satin



TM-I1436
Iron adjusting screw

Material | Iron
Size | ϕ 12/ ϕ 19
Height | 25/30/40/50/60/70/80/100/120/150

Finish | Polishing/Satin



TM-I1435
Solid stainlesssteel adjusting screw

Material | Stainless steel
Size | ϕ 18/ ϕ 22/ ϕ 25/ ϕ 30
Height | 25/30/40/50/60/70/80/100/120/150

Finish | Polishing/Satin



TM-I1437
Brass adjusting screw

Material | Stainless steel
Size | ϕ 12/ ϕ 18/ ϕ 25/ ϕ 30
Height | 25/30/40/50/60/70/80/100/120/150

Finish | Polishing/Satin

Stainless Steel Tube



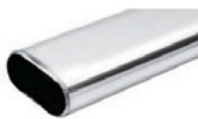
TM-H1260

Stainless steel tube

Material / 201, 304, 316 Stainless steel

Size / Φ 19, Φ 22, Φ 25

Finish / Polishing/Satin

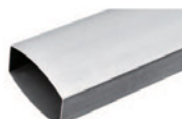


Stainless steel tube

Material / 201, 304, 316 Stainless steel

Size / Φ 19, Φ 22, Φ 25

Finish / Polishing/Satin



Stainless steel tube

Material / 201, 304, 316 Stainless steel

Size / Φ 19, Φ 22, Φ 25

Finish / Polishing/Satin



Stainless steel tube

Material / 201, 304, 316 Stainless steel

Size / Φ 19, Φ 22, Φ 25

Finish / Polishing/Satin



Stainless steel tube

Material / 201, 304, 316 Stainless steel

Size / Φ 19, Φ 22, Φ 25

Finish / Polishing/Satin



TM-H1265

Stainless steel tube

Material / 201, 304, 316 Stainless steel

Size / Φ 19, Φ 22, Φ 25

Finish / Polishing/Satin



Stainless steel tube

Material / 201, 304, 316 Stainless steel

Size / Φ 19, Φ 22, Φ 25

Finish / Polishing/Satin



TM-H1267

Stainless steel tube

Material / 201, 304, 316 Stainless steel

Size / Φ 19, Φ 22, Φ 25

Finish / Polishing/Satin



Track

Material / 201/304/316 stainless steel

Finish / Polishing/Satin



Track

Material / 201/304/316 stainless steel

Finish / Polishing/Satin



Channel steel

Material / 201/304/316 stainless steel

Finish / Polishing/Satin



Channel steel

Material / 201/304/316 stainless steel

Finish / Polishing/Satin



Clamp with adjusting

Material | Zinc alloy

Size | L/S

Finish | Grey/Polishing/Satin/AB/AC/
Gold**TM-I1322**

Clamp with adjusting

Material | Zinc alloy

Size | L/S

Finish | Grey/Polishing/Satin/AB/AC/
Gold**TM-I1323**

The glass clamp with adjusting

Material | Zinc alloy

Size | XL/L/M/S

Finish | Grey/Polishing/Satin/AB/AC/
PC/Gold

The glass clamp with adjusting

Material | Zinc alloy

Size | L/M/S

Finish | Grey/Polishing/Satin/AB/AC/
PC/Gold

The glass clamp with adjusting

Material | Zinc alloy

Size | L/M/S

Finish | Grey/Polishing/Satin/AB/AC/
PC/Gold

The glass clamp with adjusting

Material | Zinc alloy

Size | L/M/S

Finish | Grey/Polishing/Satin/AB/AC/
PC/Gold**TM-I1332**

Square aluminum glass clamp

Material | magnesium

The glass thickness |
30mm/40mm/60mm/100mm

The glass clamp with adjusting

Material | Zinc alloy

Finish | Grey/Polishing/Satin/AB/AC/
Gold**TM-I1333**

Square aluminum glass clamp

Material | Zinc alloy

The glass thickness | 8mm/10mm/12mm

**TM-I1409**

Iron bracket with black glue



Glass clamp

Material | Zinc alloy

The glass thickness |
8mm/10mm/12mm/15mm**TM-I1320**

Glass clamp

Material | Zinc alloy

The glass thickness |
8mm-12mm

Glass clamp

Material | Zinc alloy

The glass thickness |
8mm-12mm

Glass clamp

Material | Zinc alloy

The glass thickness |
10mm/12mm

Glass clamp

Material | Zinc alloy

The glass thickness |
8mm/10mm/12mm

Glass clamp

Material | Zinc alloy

The glass thickness |
10mm/12mm**TM-J1647**

Round aluminum cake

Size | ϕ 20/ ϕ 25/ ϕ 30/ ϕ 35/
 ϕ 40/ ϕ 50/ ϕ 60/ ϕ 70/
 ϕ 80/ ϕ 100**TM-J1650**

Oval aluminum cake

Size | ϕ 20/ ϕ 25/ ϕ 30/ ϕ 35/
 ϕ 40/ ϕ 50/ ϕ 60/ ϕ 70/
 ϕ 80/ ϕ 100**TM-J1609**

Stainless steel dust remover

Material | Stainless steel

Size
35-55mm
55-75mm**TM-J1649**

Round stainless steel cake

Size | ϕ 20/ ϕ 25/ ϕ 30/ ϕ 35/
 ϕ 40/ ϕ 50/ ϕ 60/ ϕ 70/
 ϕ 80/ ϕ 100**TM-I1433**

Solid aluminum adjusting screw

Material | Magnalium

Size | ϕ 18/ ϕ 25/ ϕ 30



Office and Showroom

Jdeideh, Facing Sagesse Garden,
Zainoun Bldg., Ground Floor
+961 01 873 129
+961 70 452 474
showroom@farhatsteel.com

Factory

Nahr el Mot, Beirut, Lebanon
+961 01 878 371
+961 03 716 166
info@farhatsteel.com